

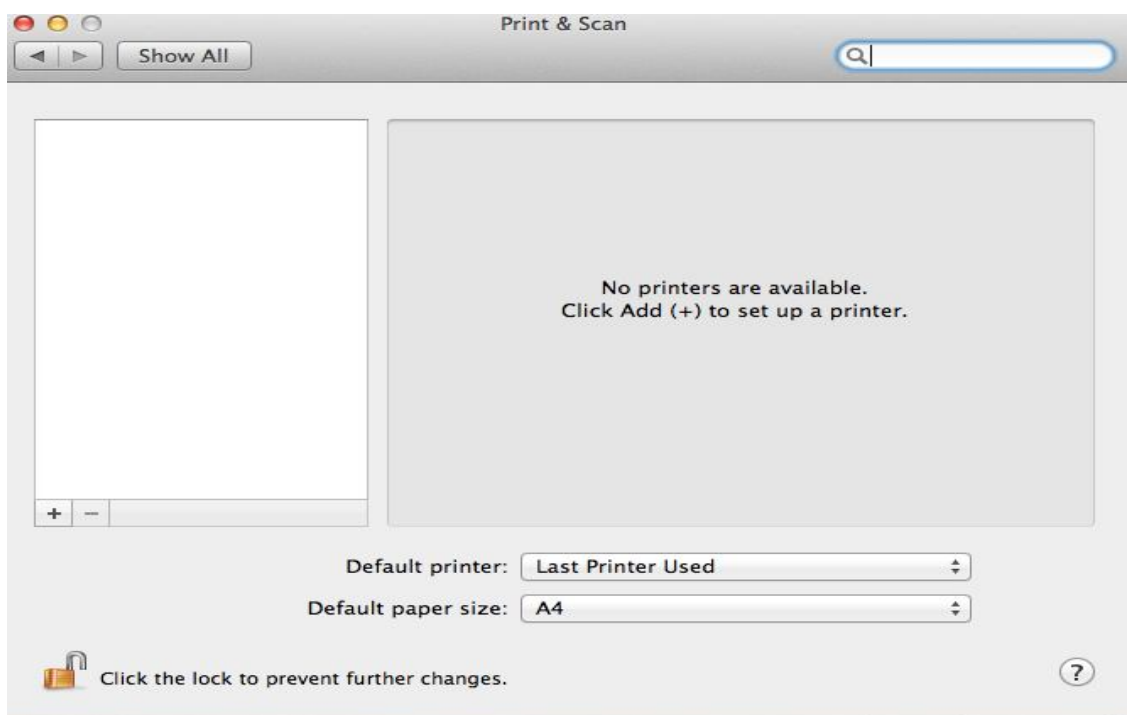
Lexmark MS811DN

Mac OS:

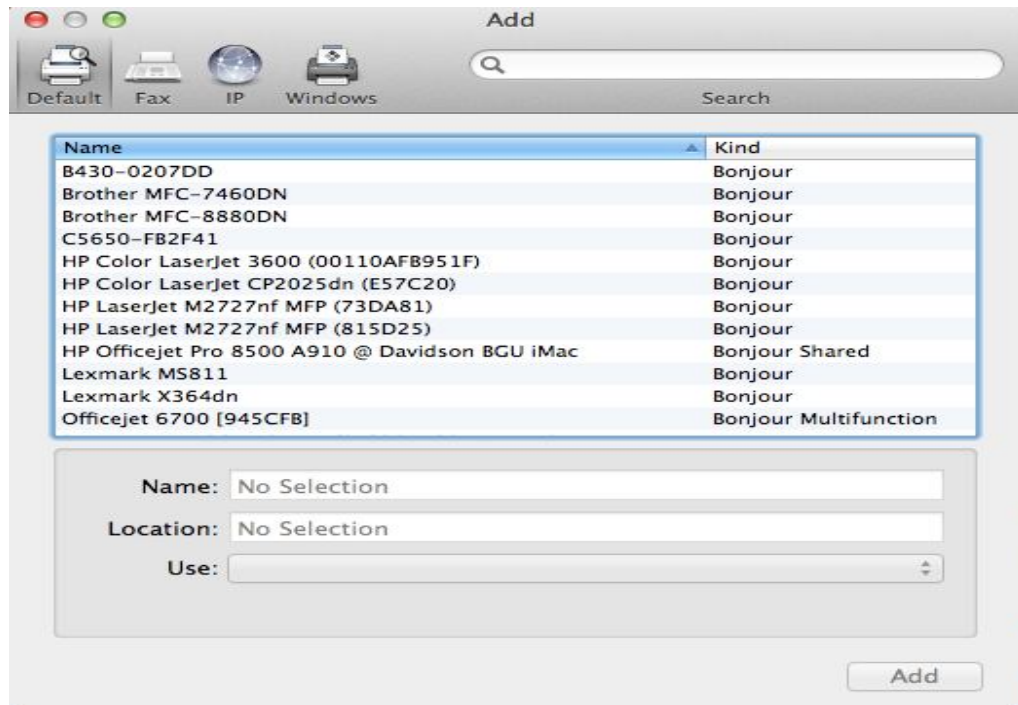
1) System Preferences



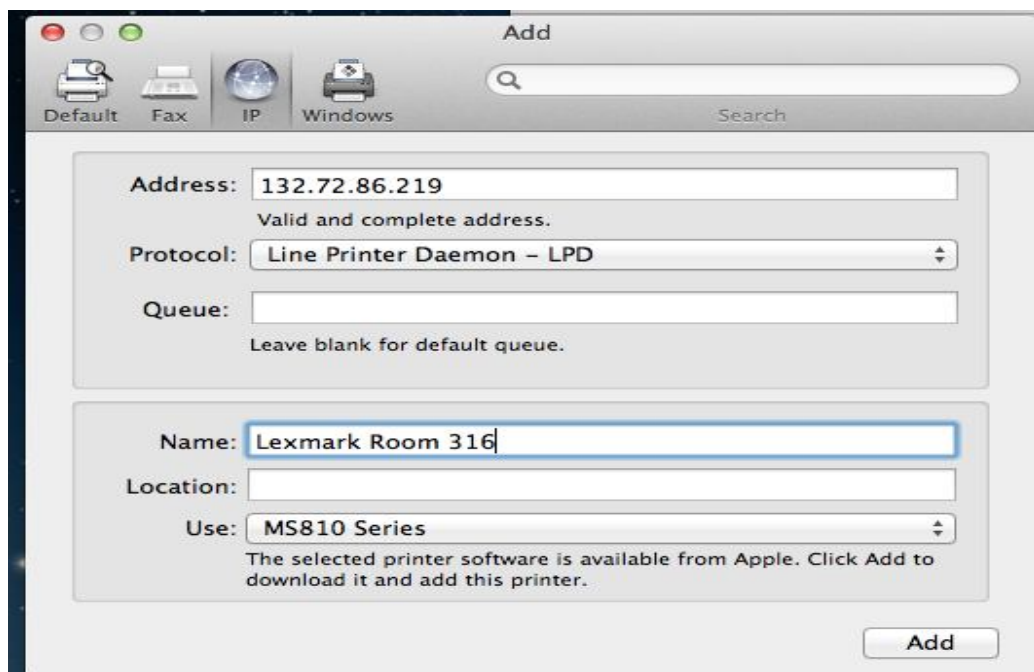
2) Select Print & Scan



3) Select the option "+" to add printers:



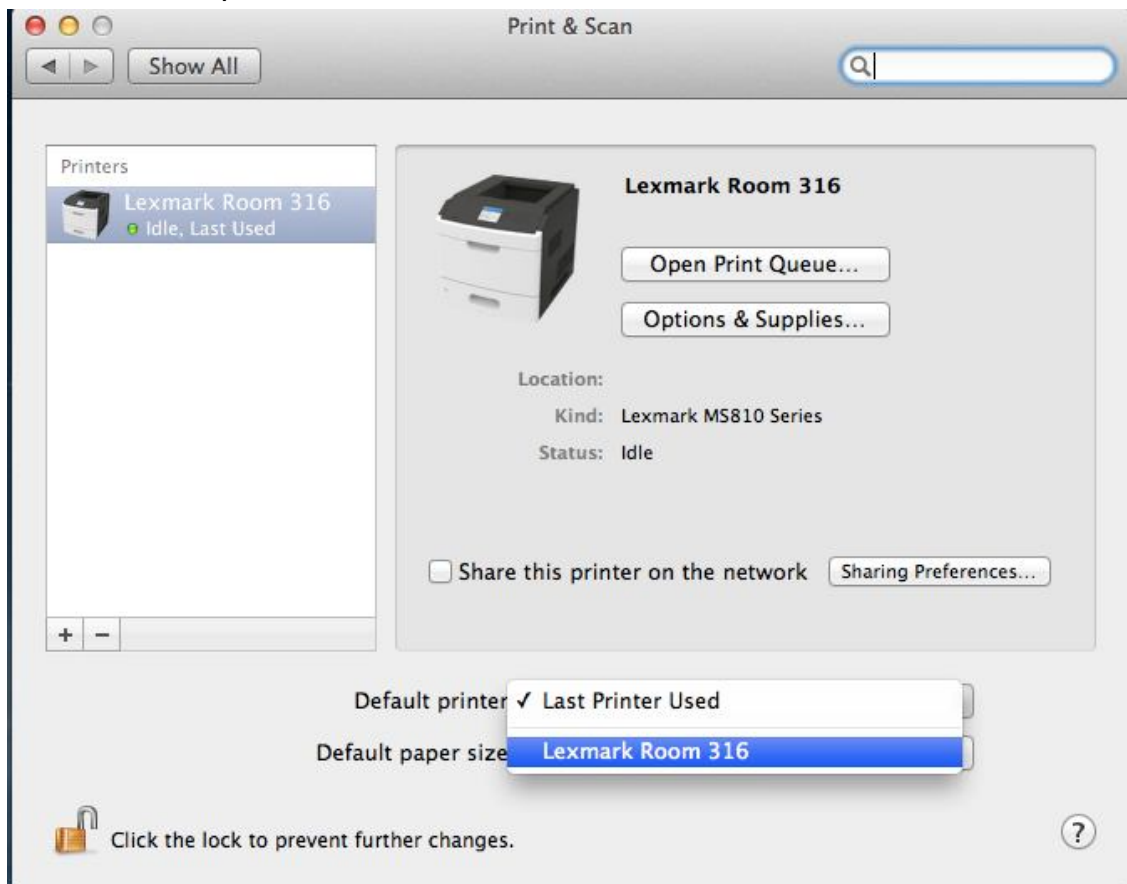
4) Select a Address : 132.72.86.219 and name: Lexmark room 316



5) Select a Setting up → Continue



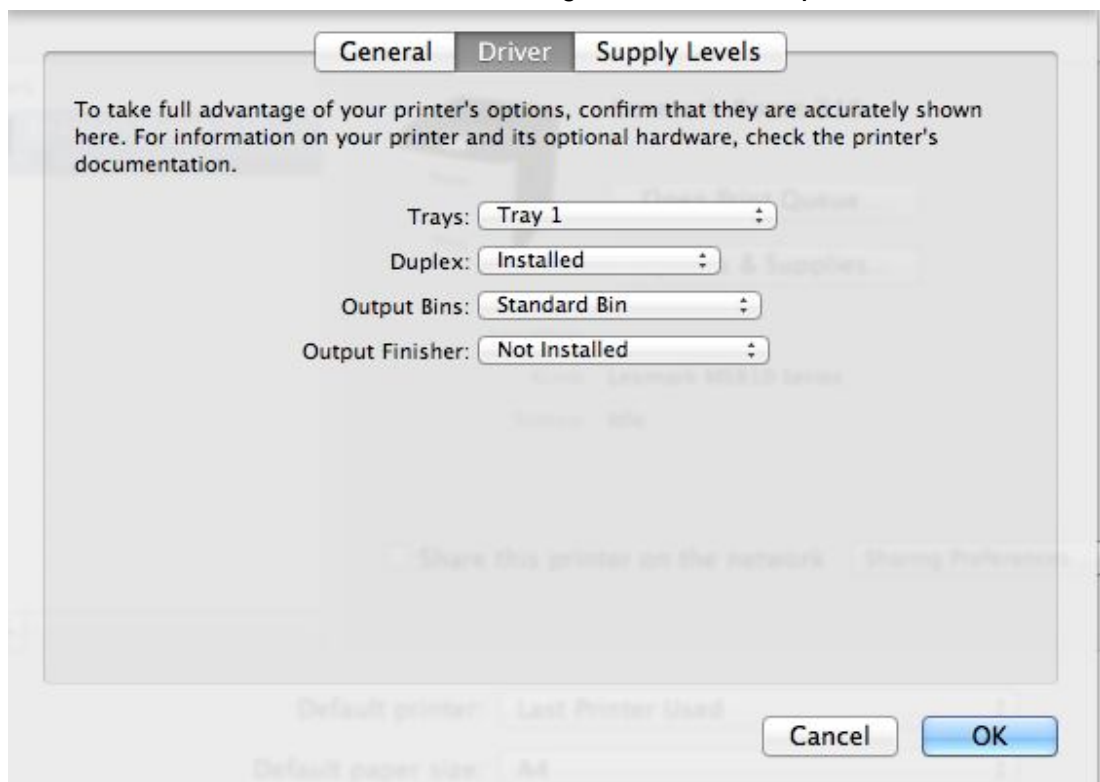
6) Select Default printer



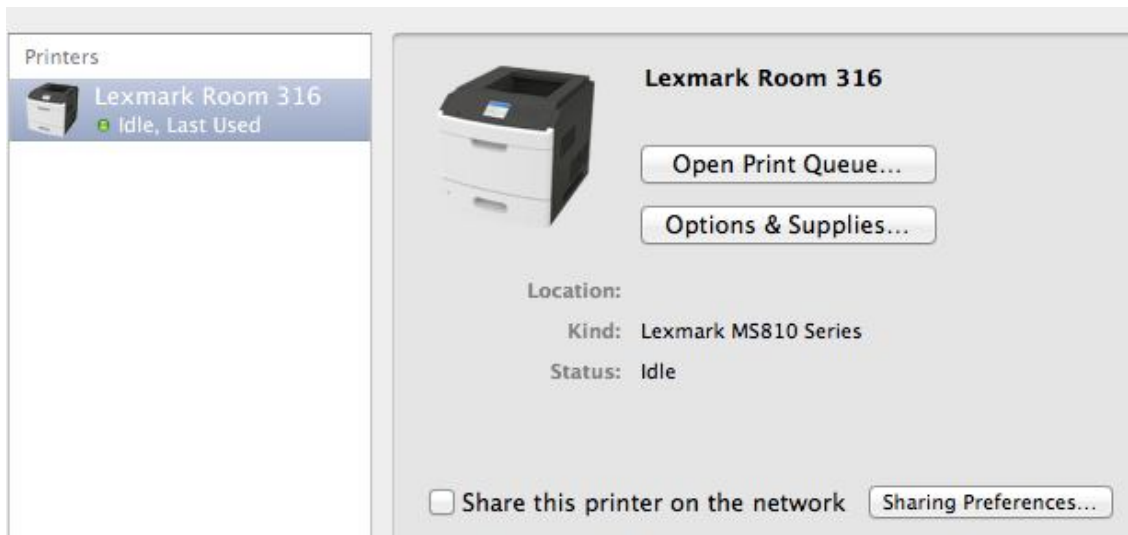
7) Select Options & Supplies :



8) In the windows select Driver and change in the line Duplex: Installed :



9) Printer installed. Close all windows.



Download driver from internet link:

http://support.lexmark.com/index?locale=en&page=product&productCode=LEXMARK_MS811&segment=SUPPORT&userlocale=EN_US&frompage=null#1

Lexmark MS811

[<<select a different model](#)



Recommended Firmware Update (May 2013)

Feature Enhancements and Fix Information.

Universal Print Driver Version 2.6.0.0 Release Notes '13

New UPD Driver Functions and Fix Information.

Enter Keyword(s)

SEARCH

Downloads Top Articles Manuals How-To Videos

Drivers & Software

Please Select your Operating System

Operating System
Linux/Unix
Macintosh
Other
Windows

4 bit version of Microsoft Windows

Last Updated

9)Printer Name: Lexmark roo316 and the default printer (yes)