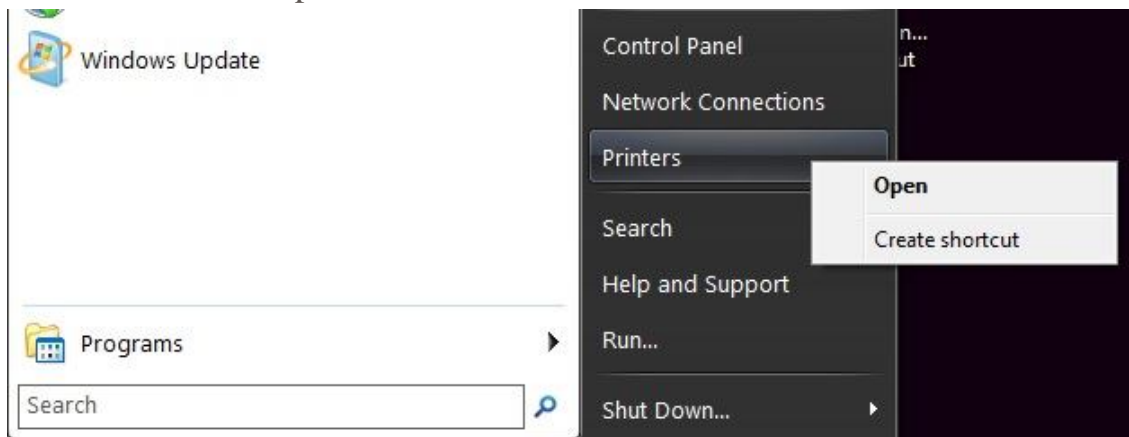


Lexmark MS811DN

Windows 7:

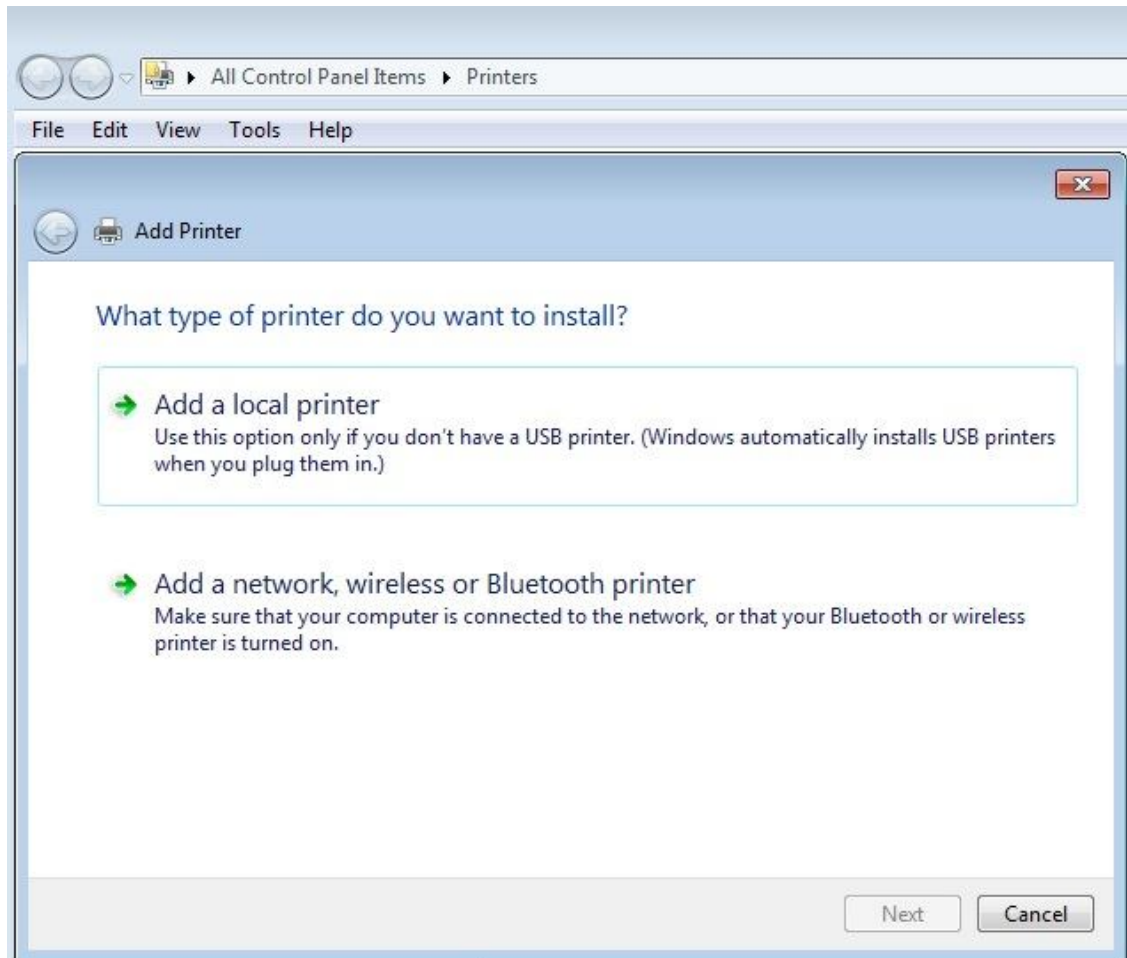
1) Start → Printers → Open



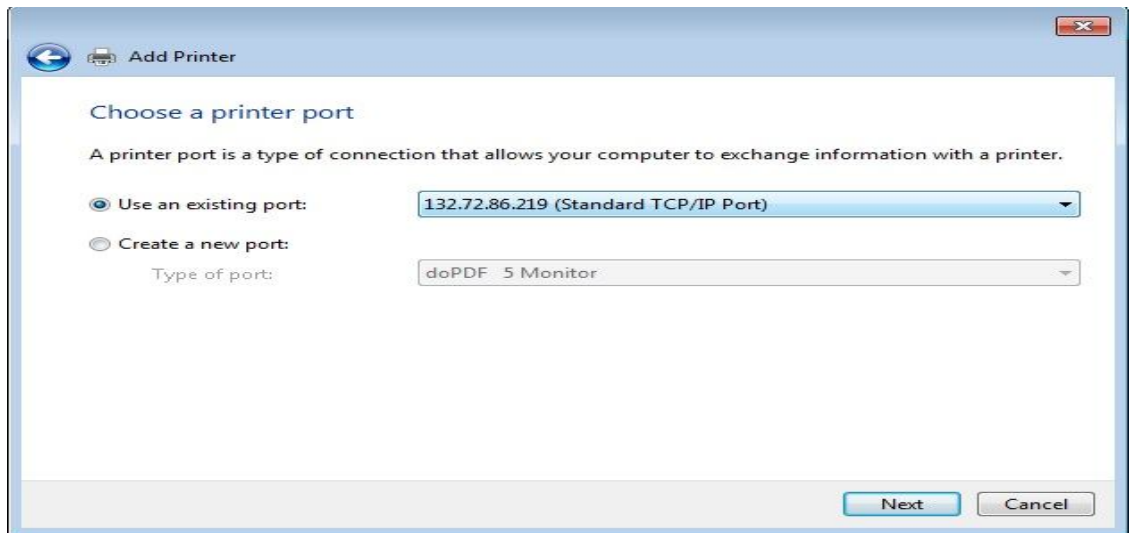
2) Add Printer



3) Select the option: Add a local printer → Next

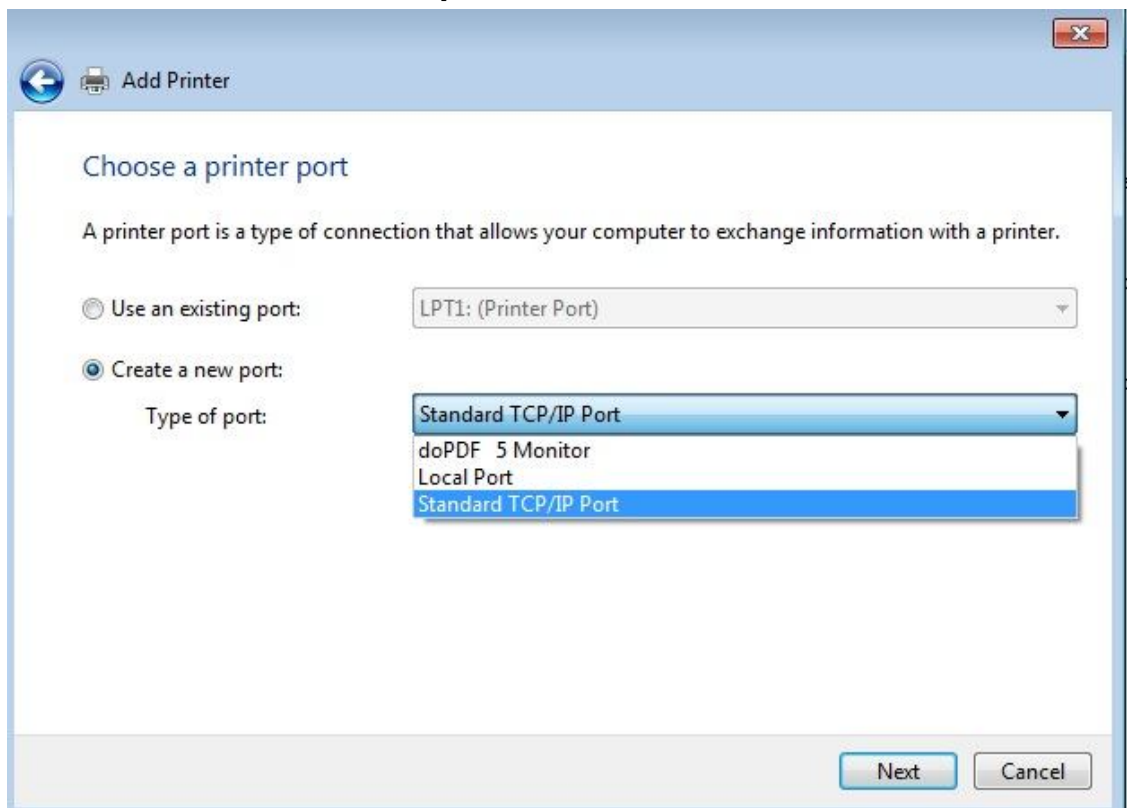


4) Select a Use an existing port (Ip_132.72.86.219)



5)

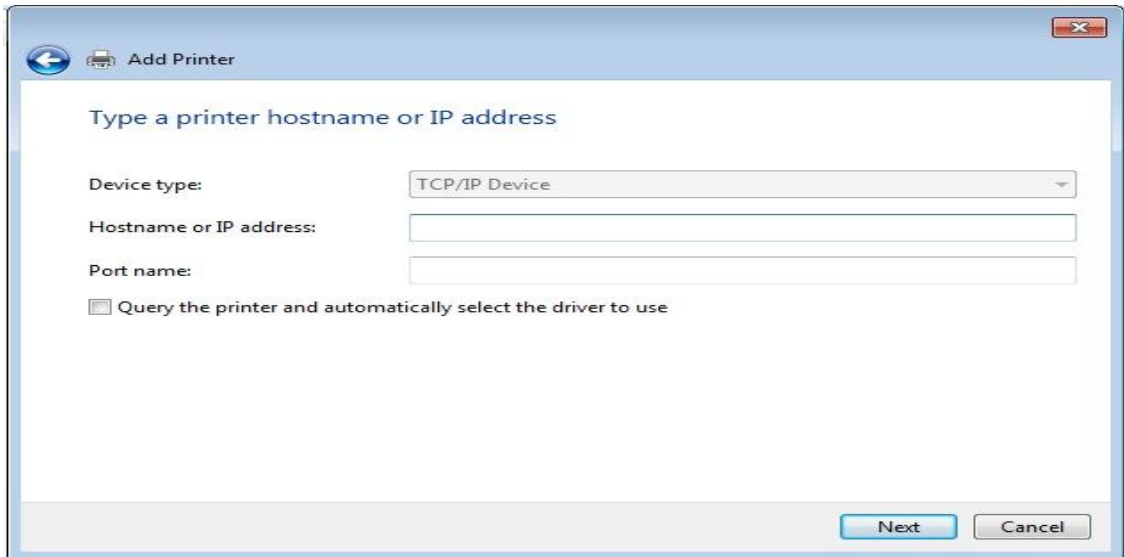
In case there is not a second please select:



Select a Printer Port (Create a new port → Standard TCP/IP Port)

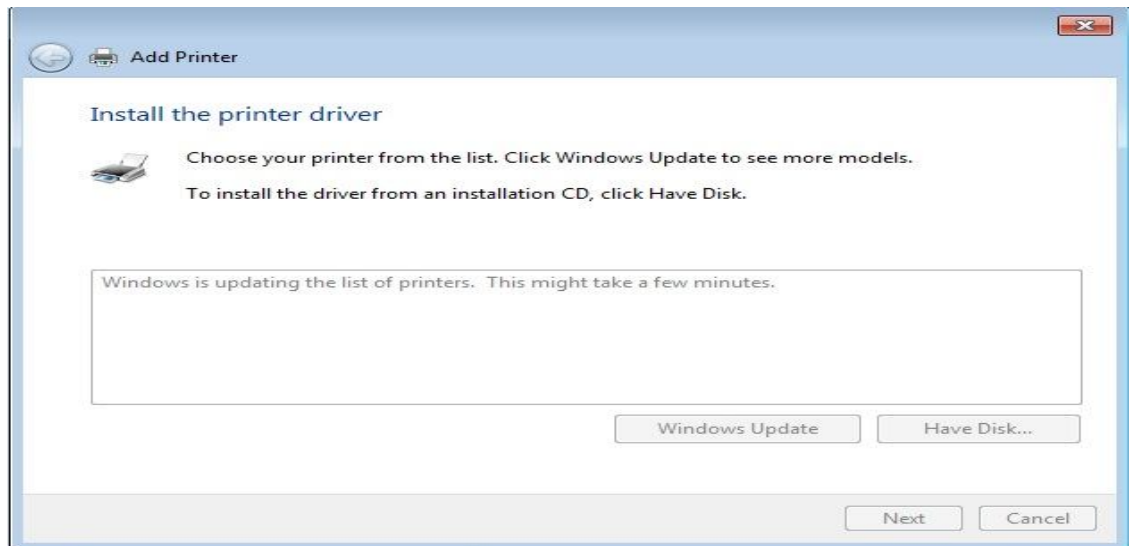
6) Next → Next

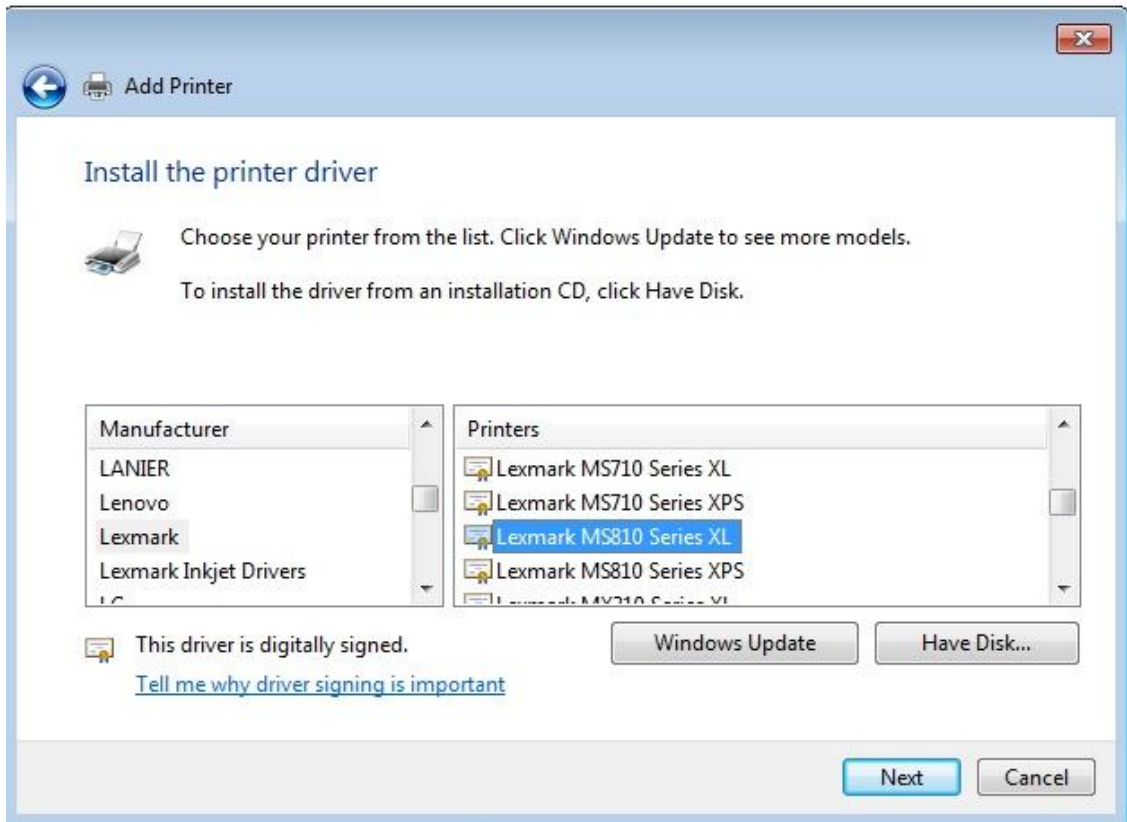
7) Enter the Printer IP address and Port Name : 132.72.86.219



Select Next .

8) Select windows update end select manufacturer Lexmark and Printers Lexmark MS810 Series XL





Or download from internet link

http://support.lexmark.com/index?locale=en&page=product&productCode=LEXMARK_MS811&segment=SUPPORT&userlocale=EN_US&frompage=null#1

Lexmark MS811

[<<select a different model](#)



Recommended Firmware Update (May 2013)

Feature Enhancements and Fix Information.

Universal Print Driver Version 2.6.0.0 Release Notes '13

New UPD Driver Functions and Fix Information.

Enter Keyword(s)

SEARCH

Downloads Top Articles Manuals How-To Videos

Drivers & Software

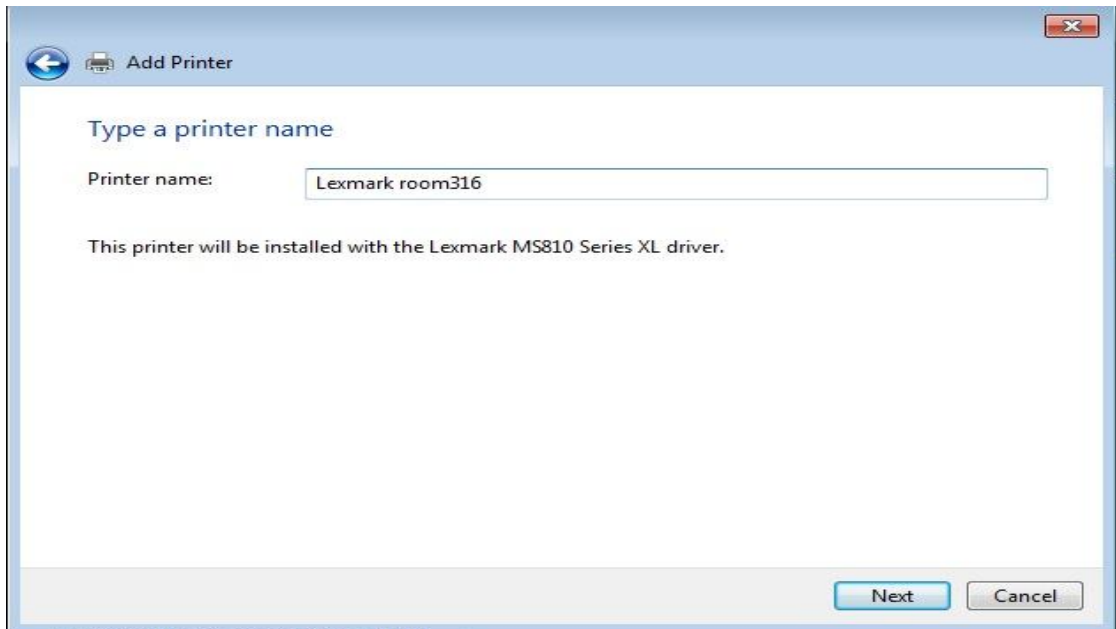
Please Select your Operating System

Operating System
Linux/Unix
Macintosh
Other
Windows

4 bit version of Microsoft Windows

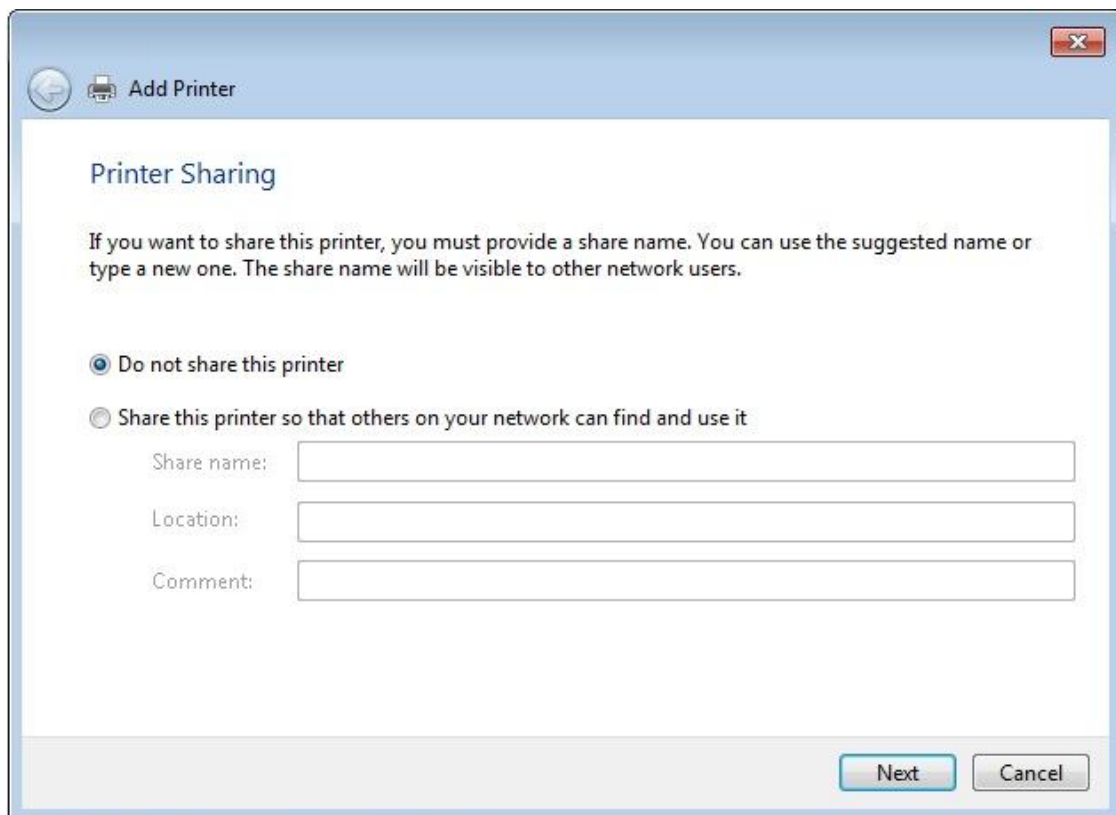
Last Updated

9)Printer Name: Lexmark roo316



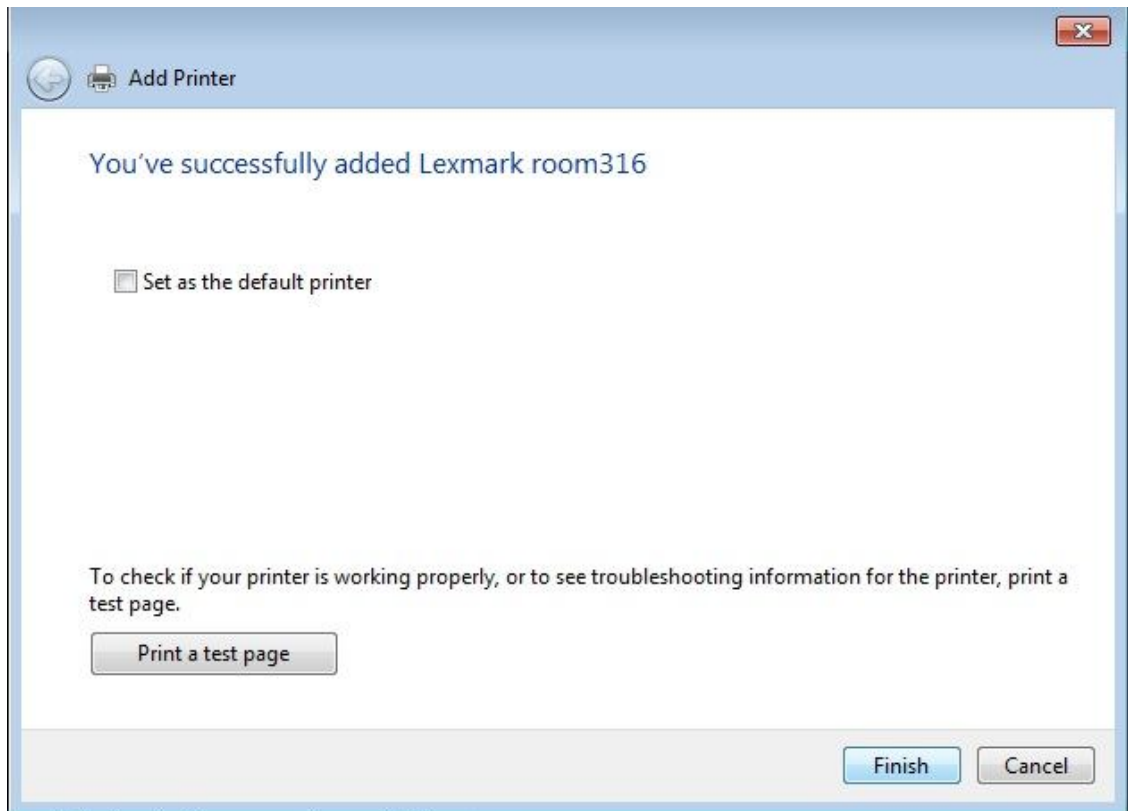
The screenshot shows a Windows 'Add Printer' wizard window. The title bar reads 'Add Printer'. The main heading is 'Type a printer name'. Below this, there is a label 'Printer name:' followed by a text input field containing 'Lexmark room316'. A message below the field states: 'This printer will be installed with the Lexmark MS810 Series XL driver.' At the bottom right, there are two buttons: 'Next' and 'Cancel'.

10)Select do not share this printer



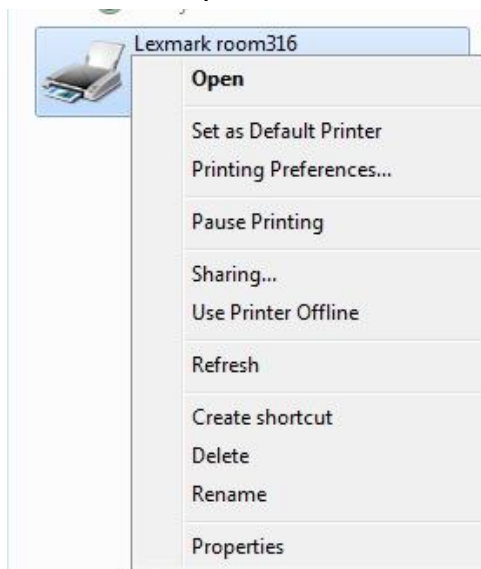
The screenshot shows the 'Printer Sharing' step of the 'Add Printer' wizard. The title bar reads 'Add Printer'. The heading is 'Printer Sharing'. The text below reads: 'If you want to share this printer, you must provide a share name. You can use the suggested name or type a new one. The share name will be visible to other network users.' There are two radio button options: 'Do not share this printer' (which is selected) and 'Share this printer so that others on your network can find and use it'. Below the second option are three text input fields labeled 'Share name:', 'Location:', and 'Comment:'. At the bottom right, there are two buttons: 'Next' and 'Cancel'.

11) Select to print a test page : yes

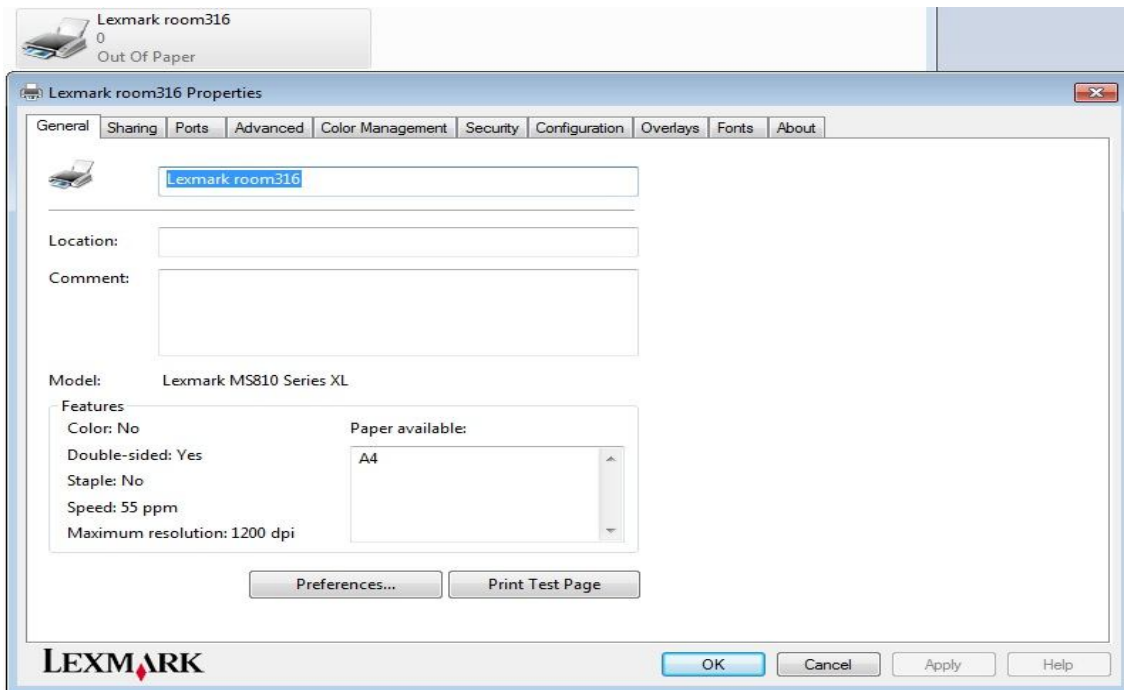


12) Select finish

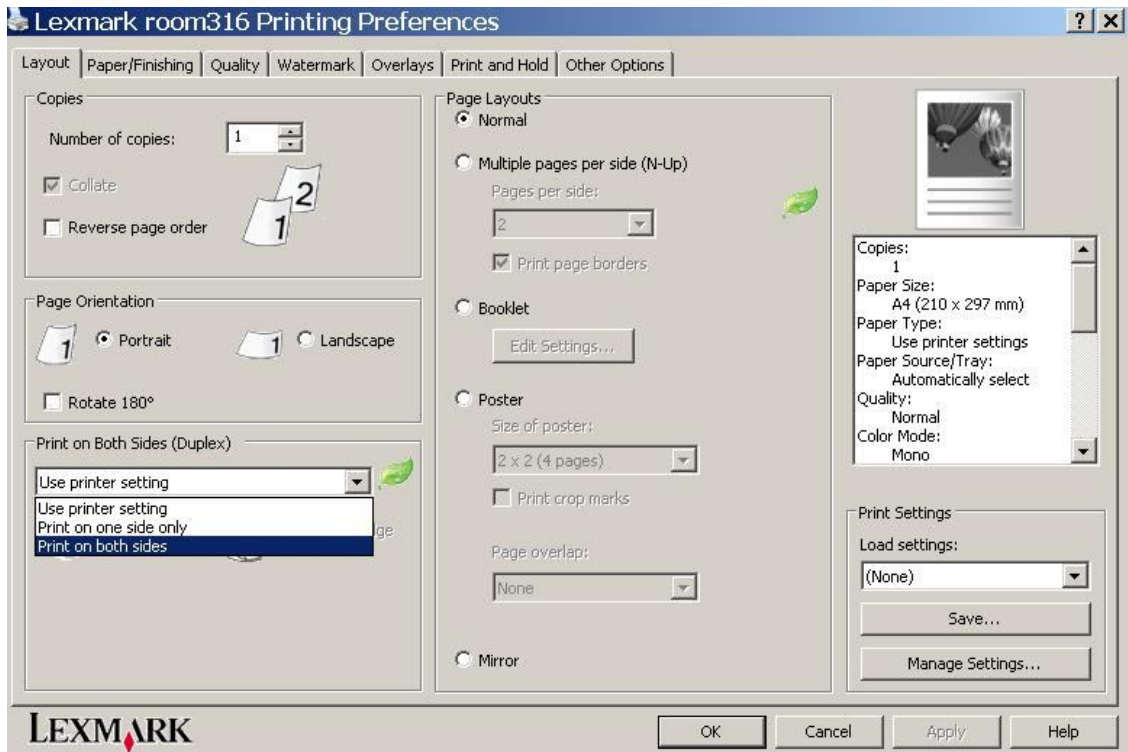
13) Select Properties from Lexmark room316



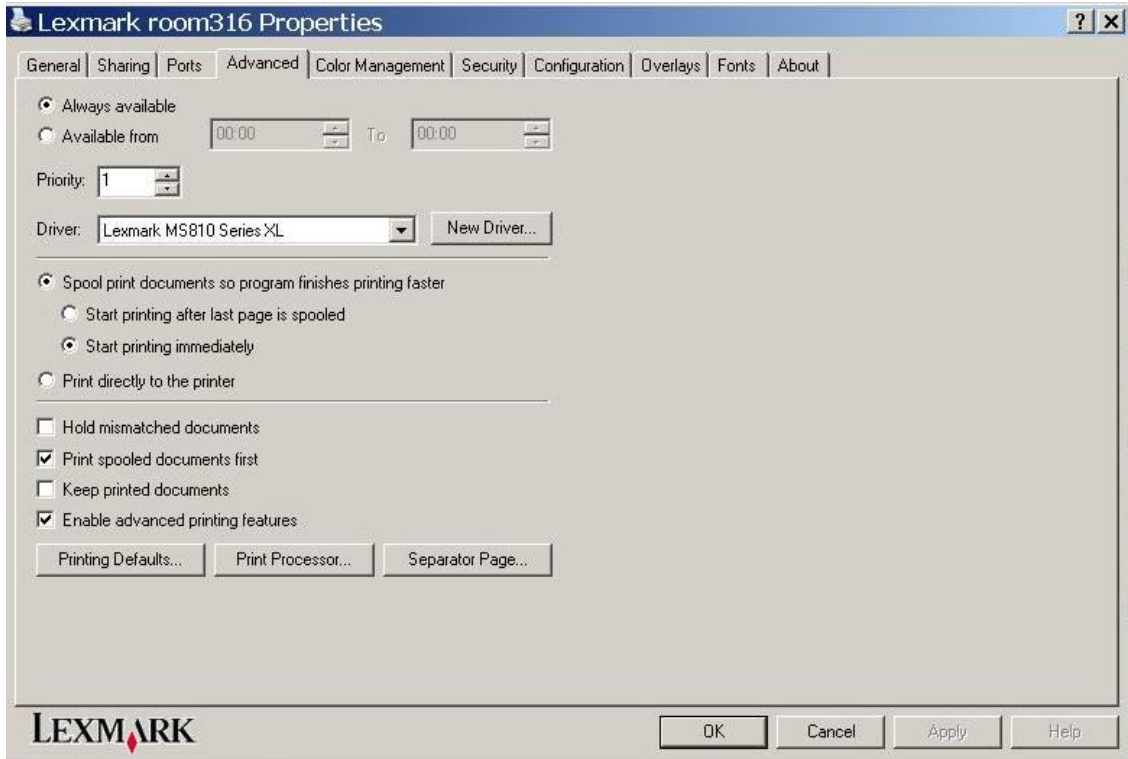
14) Select General → Printing Preferences :



15) In the Layout windows select Print on Both Sides (Duplex) and Ok:



16) Select Advanced → Printing Defaults:



17) Select Layout → Print on Both Sides (Duplex) → Ok:

